

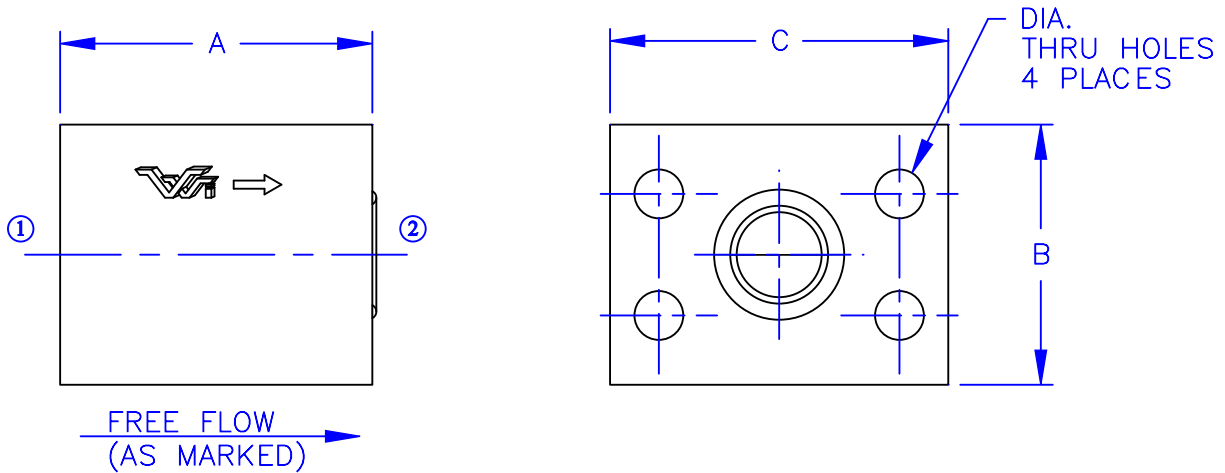


CHECK VALVE

90175 SERIES

IN-LINE

POPPET TYPE
SPLIT FLANGE



DESCRIPTION

- AN IN-LINE STYLE, CHECK VALVE INTENDED FOR BLOCKING FLUID FLOW.

OPERATION

- FLOW FROM "1" TO "2" IS ALLOWED WITH A STANDARD CRACK PRESSURE OF 5 PSI.
- FLOW FROM "2" TO "1" IS BLOCKED WITH A SPRING BIAS TO ASSIST IN STATIC AND LOW LOAD CONDITIONS.

FEATURES

- ALUMINUM BODY
- STEEL POPPET.
- NO INTERNAL PACKINGS.
- BOLT PATTERN FOR SAE STANDARD PRESSURE (CODE 61).
- LOW PRESSURE DROP.
- HYDRAULIC OILS-GENERAL.
- INCLUDES O-RING.
- * SPECIAL CRACK PRESSURES AVAILABLE UPON REQUEST.

- SPECIFICATIONS -

| | |
|--------------------------|----------------|
| HYDRAULIC SYMBOL | |
| OPERATING PRESSURE | 3500 PSI |
| TEMPERATURE RANGE | 250°F TO -40°F |
| STANDARD CRACK PRESSURE | 5 PSI * |
| ALL DIMENSIONS IN INCHES | |

- ORDERING INFORMATION -

ASSEMBLY NUMBER 90175-XXX-XX
 SERIES NUMBER _____
 FLANGE SIZE _____
 CRACK PRESSURE (PSI) _____
 (IF NON-STANDARD)

| MODEL | SAE FLANGE SIZE | CAPACITY | A | B | C | DIA. |
|-----------|-----------------|----------|------|------|------|-------|
| 90175-100 | 1.00 | 35 GPM | 2.50 | 2.00 | 3.00 | 0.438 |
| 90175-125 | 1.25 | 60 GPM | 3.00 | 2.50 | 3.25 | 0.469 |
| 90175-150 | 1.50 | 95 GPM | 4.00 | 2.50 | 4.00 | 0.560 |
| 90175-200 | 2.00 | 130 GPM | 4.00 | 3.00 | 4.00 | 0.560 |



Vonberg Valve, inc.

HYDRAULIC VALVE SPECIALISTS

3800 INDUSTRIAL AVE.
 ROLLING MEADOWS, IL 60008-1085
 PH: (847) 259-3800 FAX: (847) 259-3997